



23 May 2008

ASX Release

White Cliff Nickel Limited (ASX: WCN)

White Cliff Nickel new iron ore projects in Pilbara

Summary

- White Cliff Nickel has taken an option to acquire a prospective iron ore exploration tenement in the Pilbara region. Entitled the “Trevarton Creek Project”, the tenement contains previously mapped Robe Pisolite, the host for channel iron ore deposits (CID).
- In addition, the Company has applied for three new exploration tenements covering approximately 1470 km² within the southeast Pilbara region. The “Oakover River Project” area is underexplored and shows potential for iron and manganese mineralisation.

Trevarton Iron Project

White Cliff Nickel Limited has taken an option to acquire the iron-prospective Exploration Licence 08/1835 within the Pilbara region of Western Australia. The project area, known as “Trevarton Creek”, is located approximately 130 km northeast of Karratha, approximately 80 km north-northeast from the port of Cape Preston. It is situated along the North West Coastal Highway (Figure 1) providing good access.

The project is well located, with an adjoining tenement containing Mineralogy Pty Ltd’s Southwest Fortescue and Bilanoo taconite iron deposits and is about 30km southwest, of the channel iron ore deposits along the Robe River, including the world-class Deepdale Deposits. The project covers about 48 km² and contains approximately 1.8 km² of previously GSWA identified tertiary-aged Robe Pisolite outcrop (Figure 2). The Robe Pisolite is the host for channel iron ore deposits within the Fortescue area.

The Company is currently collating previous exploration data of the area and will make a field visit next month to further assess the project potential and design the exploration program.

Oakover River Iron and Manganese Project

The Company has applied for three exploration tenements (ELA 08/3250, ELA 08/3251 & ELA 08/3252) located approximately 140 km east of the town of Newman, Western Australia (Figure 1). The project area, known as "Oakover River", is approximately 1470 km² in area and provides very good exploration potential for iron and manganese mineralisation in an underexplored area. Adjoining competitor tenement holders include Pilbara Manganese (Consolidated Minerals Ltd), Fortescue Metals Group, AusQuest and Spitfire Resources.

Portions of two of these applications were applied for simultaneously by AusQuest and thus the competing tenements will go into a ballot process unless other arrangements are made.

Previous exploration data of the area is currently being evaluated and a field visit is planned for later this year to further assess the project potential.

"Our technical team closely reviewed the iron ore tenements and we consider them to be highly prospective in blue chip iron ore territory." said Mike Langoulant, managing director of White Cliff Nickel.

"The move to acquire these iron ore prospects continues White Cliff Nickel's strategy to aggressively identify and secure high potential resource projects. Our Company's aim is to build shareholder value by developing a portfolio of quality projects. Whilst the Company has broadened its commodity base into iron ore, the Company's main focus will remain on nickel exploration as demonstrated by the recent announcement of the fast tracking of our existing nickel tenements with major Korean partners, Daewoo International and Korea Resources,"

For further information please contact

www.wcnickel.com.au.

Investors

Mike Langoulant
Managing Director
(08) 9321 2233
mike@wcnickel.com.au

Media

Rudi Michelson
Monsoon Communications Pty Ltd
(03) 9620 3333
rudim@monsoon.com.au

About White Cliff Nickel Limited

White Cliff Nickel is a Western Australian based nickel explorer which listed on ASX on 14 December 2007 having raised \$6 million. White Cliff Nickel's core project is the White Cliff nickel project situated 60 kilometres south-east of Laverton WA. White Cliff Nickel has signed an MOU with a Korean consortium, comprising Daewoo International Corporation and the 100% government owned Korea Resources Corporation, to joint venture this project which covers over 1,000 square kilometres in this prospective region.

The technical exploration and mining information contained in the above announcement has been reviewed and approved by Dr Gavin England, who has sufficient experience which is relevant to the style of mineralisation and type of deposit under consideration and to the activity which he is undertaking to qualify as a Competent Person as defined in the 2004 Edition of the 'Australasian Code for Reporting of Exploration Results, Mineral Resources and Ore Reserves'. Dr. England is employed by England Geological Pty Ltd and acts as White Cliff Nickel's Exploration Manager. He is a member of AIG (Australian Institute of Geosciences).

Dr England consents to the inclusion in this announcement of such information in the form and context in which it appears.

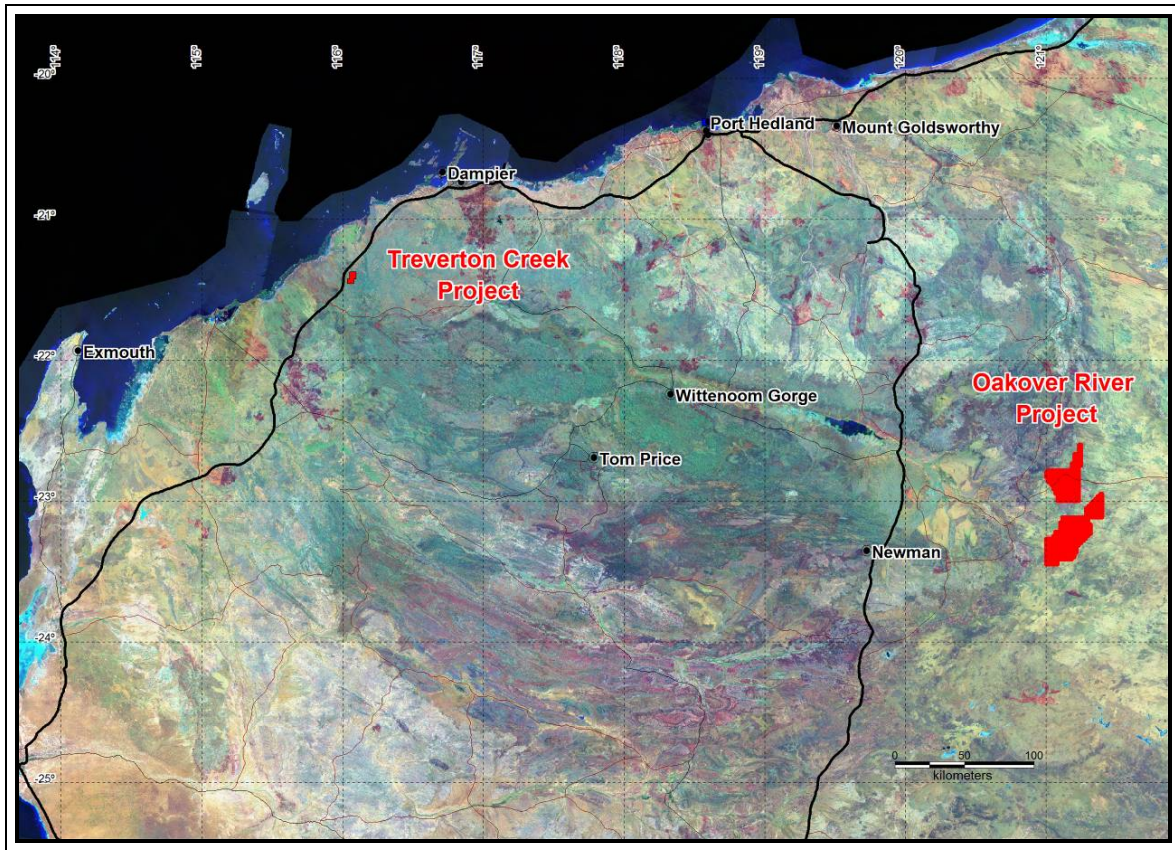


Figure 1. Location plan of the Treverton and Oakover River Projects, Pilbara Region of Western Australia.

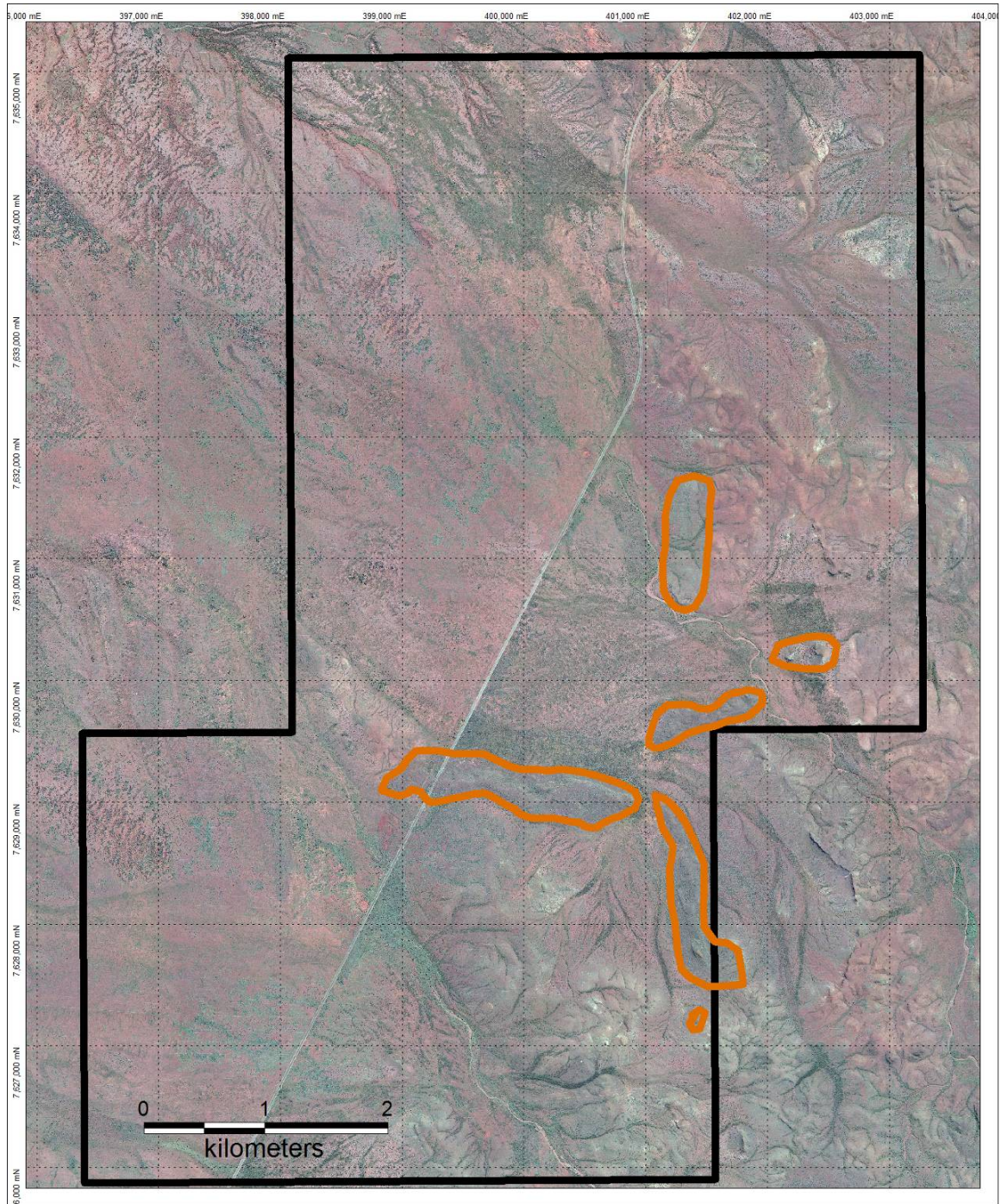


Figure 2. An orthophotographic image of the Trevarton Project, tenement E 08/1835. The orange polygons represent an interpreted outline of the iron-rich Robe Pisolite that outcrops in the area.