



# ADVANCING A MATERIAL COPPER DISCOVERY

▲ CORPORATE PRESENTATION



OTCQB: WCMLF

ASX: WCN

[WCMINERALS.COM.AU](http://WCMINERALS.COM.AU)

# IMPORTANT NOTICE & DISCLAIMER



The information contained in this presentation has been prepared by White Cliff Minerals Limited (the Company).

To the maximum extent permitted by law, the Company and its related bodies corporate, affiliates and each of their respective directors, officers, partners, employees, advisers and agents and any other person involved in the preparation of the presentation disclaim all liability and responsibility (including without limitation any liability arising from fault or negligence) for any direct or indirect loss or damage which may arise or be suffered through use or reliance on anything contained in, or omitted from, the presentation.

No representation or warranty, express or implied, is given as to the fairness, accuracy, completeness, likelihood of achievement or reasonableness of any assumptions, forecasts, prospective statements or returns contained in the presentation. Such assumptions, forecasts, prospective statements or returns are by their nature subject to significant uncertainties and contingencies, have been based on current expectations about future events and are subject to risks, uncertainties and assumptions that could cause actual results to differ materially from the expectations described. The Company has no responsibility or obligation to inform you of any matter arising or coming to its notice, after the date of this presentation document, which may affect any matter referred to in the presentation.

All statements other than statements of historical fact included in this presentation including, without limitation, statements regarding future plans and objectives of White Cliff, are forward-looking statements. Forward-looking statements can be identified by words such as "anticipate", "believe", "could", "estimate", "expect", "future", "intend", "may", "opportunity", "plan", "potential", "project", "seek", "will" and other similar words that involve risks and uncertainties. These statements are based on an assessment of present economic and operating conditions, and on a number of assumptions regarding future events and actions that are expected to take place. Such forward-looking statements are not guarantees of future performance and involve known and unknown risks, uncertainties, assumptions and other important factors, many of which are beyond the control of the Company, its directors and the management of White Cliff that could cause the Company's actual results to differ materially from the results expressed or anticipated in these statements.

White Cliff cannot and does not give any assurance that the results, performance or achievements expressed or implied by the forward-looking statements contained in this presentation will actually occur and investors are cautioned not to place any reliance on these forward-looking statements. The Company does not undertake to update or revise forward-looking statements, or to publish prospective financial information in the future, regardless of whether new information, future events or any other factors affect the information contained in this presentation, except where required by applicable law and stock exchange listing requirements.

You must not rely on the presentation provided but make your own independent assessment of the presentation and seek and rely upon your own independent taxation, legal, financial or other professional advice in relation to the presentation and any action taken on the basis of the presentation. All information in this presentation is current as at 18 May 2025.



# INVESTOR HIGHLIGHTS



## Clear Company Strategy

Company focussed on delineation of a material copper project in tier 1 jurisdiction



## Exciting, Early Stage Copper Exploration

White Cliff has opportunistically secured a material footprint of prospective high-grade copper ground across an emerging copper region



## High Grade Copper Discovery @ Danvers

First assays<sup>1</sup> confirm a material copper discovery at Rae with results including 175m @ 2.5% Cu, 58m @ 3.08% Cu and 63m @ 2.23% Cu. Additional results pending



## Material Upside

A large underexplored tenure package located in historic and proven areas with the potential for significant, high-grade and scalable projects



## Tier 1 Jurisdiction

White Cliff has ground in Canada, a supportive jurisdiction with enabling regulatory frameworks for exploration and development



## Committed Board & Management

The company has a well-established team, with the sector expertise and experience and demonstrated skin in the game having purchased ~A\$3.9m on market and in placements over the previous 12 months

(1) See ASX announcements dated 30 April 2025 "First Assay Results from Rae Delivers 58m @ 3.08% Cu"; 6 May 2025 "175m @ 2.5% Copper hole ends in 4.46% Cu"; and 13 May 2025 "Further superior Cu intercepts at Rae"



# PROJECT LOCATIONS



## RAE

### COPPER-SILVER



- Licence area totals 1,228km<sup>2</sup>, in Nunavut
- Initial results include:
  - 175m @ 2.5% Cu (DAN25008);
  - 58m @ 3.08% Cu (DAN25003);
  - 63m @ 2.23% Cu (DAN25002).
- District scale geophysical conductive anomalies identified
- Continued drilling planned for the rest of 2025



## GREAT BEAR LAKE

### URANIUM-COPPER-GOLD-SILVER



- Licence covers an area that exceeds 2,900km<sup>2</sup> in the Northwest Territories
- The area is within the immediate proximity of significant historical mining operations such as the Eldorado, Echo Bay, Contact Lake mines that produced high grade uranium, copper, gold & silver
- The Company's recent exploration works demonstrated high grade mineralisation at surface
- World class prospective silver district identified within close proximity to the historic silver mines of Bonanza and El Bonanza



# RAE CU-AG PROJECT



# ACCESS & INFRASTRUCTURE

▲ COPPER-SILVER

## RAE - WELL LOCATED, PROXIMAL TO PORT AND INFRASTRUCTURE

- Project is well located on mainland Canada, 75 km from nearest town of Kugluktuk (population ~2000), providing support and a deep-water port
- Rae camp & project area accessed via all-weather runway
- Key logistics supported from the domestic & industrial hub of Yellowknife (population > 20,000), located only 90 minutes away by flight.
- Yellowknife has strong familiarity with the mining sector, providing logistical support to numerous nearby mining operations.
- Nearby mines include Agnico Eagle's Hope Bay (Au) mine, B2Gold Corp's Goose (Au) Mine, Burgundy Diamond Mines Ekati (diamond) mine and Rio Tinto's Diavik (diamond) Mine
- Canadian Government First Mile<sup>1</sup> funding initiatives provide further potential for infrastructure



Industrial town of Yellowknife only 90 minutes by flight



Dash 7 aircraft on the Company's all weather air strip



Town and Port of Kugluktuk, only 75km from the Rae Copper-Silver Project

(1) See various announcements by Canadian government <https://www.pm.gc.ca/en/news/news-releases/2025/03/21/prime-minister-carney-meets-premiers-and-shares-his-plan-build>

# RAE OVERVIEW



## RAE PROJECT DETAILS

- Project covers an area of 1,228km<sup>2</sup> situated ~75km from the town of Kugluktuk and an open water port

## RESULTS TO DATE

- Assays confirm the presence of substantial high-grade copper
- Key Results<sup>1</sup> include: 175m @ 2.5% Cu (*DAN25008*), 58m @ 3.08% Cu (*DAN25003*), and 63m @ 2.23% Cu (*DAN25002*).

## DANVERS VS HULK SEDIMENTARY

- The project holds the potential to host high grade, large tonnage epithermal & sedimentary copper systems
- Danvers, an epithermal vein system - mineralised envelope open in all directions
- Hulk, a large scale sediment hosted copper target with a geophysical anomaly spanning 150km<sup>2</sup> within the >72km Rae group sedimentary structure

(1) See ASX announcements dated 30 April 2025 "First Assay Results from Rae Delivers 58m @ 3.08% Cu"; 6 May 2025 "175m @ 2.5% Copper hole ends in 4.46% Cu"; and 13 May 2025 "Further superior Cu intercepts at Rae"

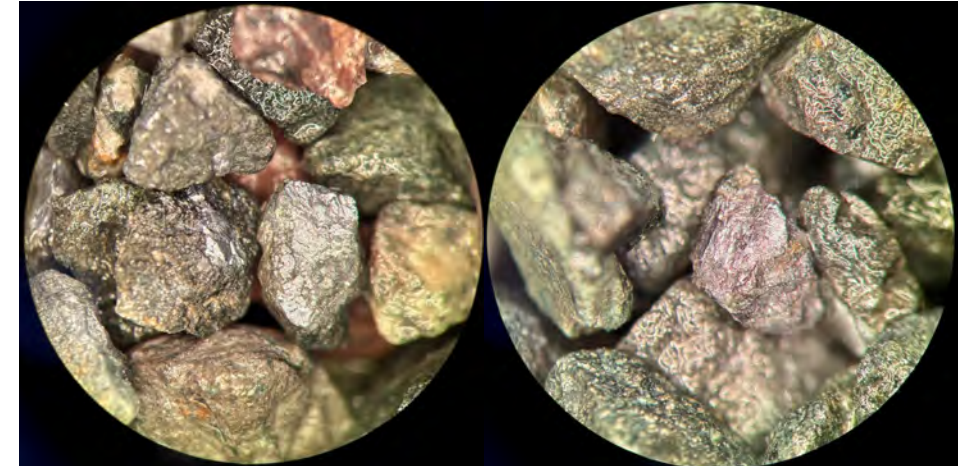


# DRILLING @ RAE



## 2025 DRILLING RESULTS

- Recent results from White Cliff's 2025 RC campaign at Danvers have affirmed the potential for a material copper discovery
- Results<sup>1</sup> include:
  - DAN25008: 175m @ 2.5% Cu & 8.66g/t silver (Ag) from 7.6m, including 14m @ 7.55% Cu & 25.8g/t Ag, ending in mineralisation with the last 1.5m sample recording 4.46% Cu & 11.58g/t Ag, open at depth
  - DAN25003: 58mtrs @ 3.08% Cu and 13.3g/t Ag from 52m, including 18m @ 5.21% Cu and 22.33g/t Ag
  - DAN25002: 63mtrs @ 2.23% Cu & 7.1g/t silver (Ag) from 9.14m, including 15m @ 5% Cu & 16.9g/t Ag from 18.29m
- Drilling extends mineralization below historic drilling limits of at least 30m



Chalcocite veining in RC drill chips from DAN25008

## NEXT STEPS

- Further assays from Danvers due in the coming weeks
- Follow up diamond drilling being planned to commence in July 2025
- Selected geophysical survey and investigation to be undertaken to explore 9.1km target fault zone



Sample No. F005958 from Rae

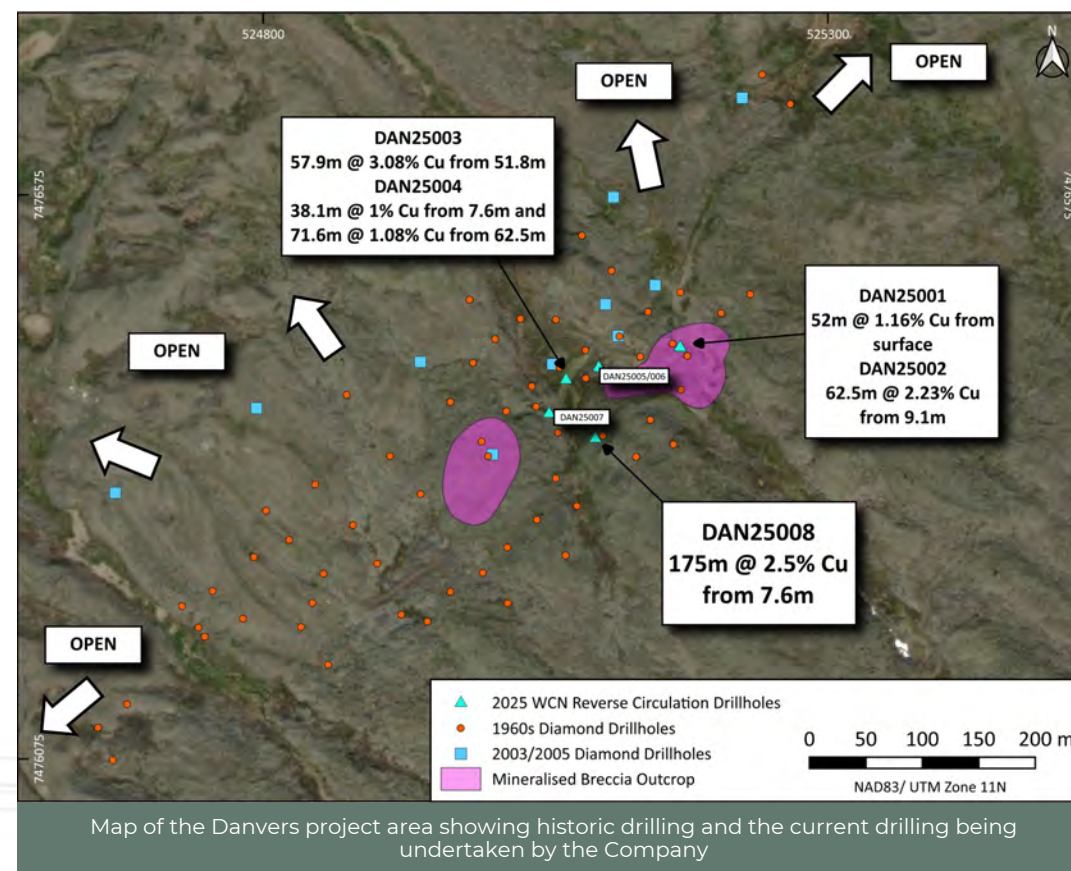
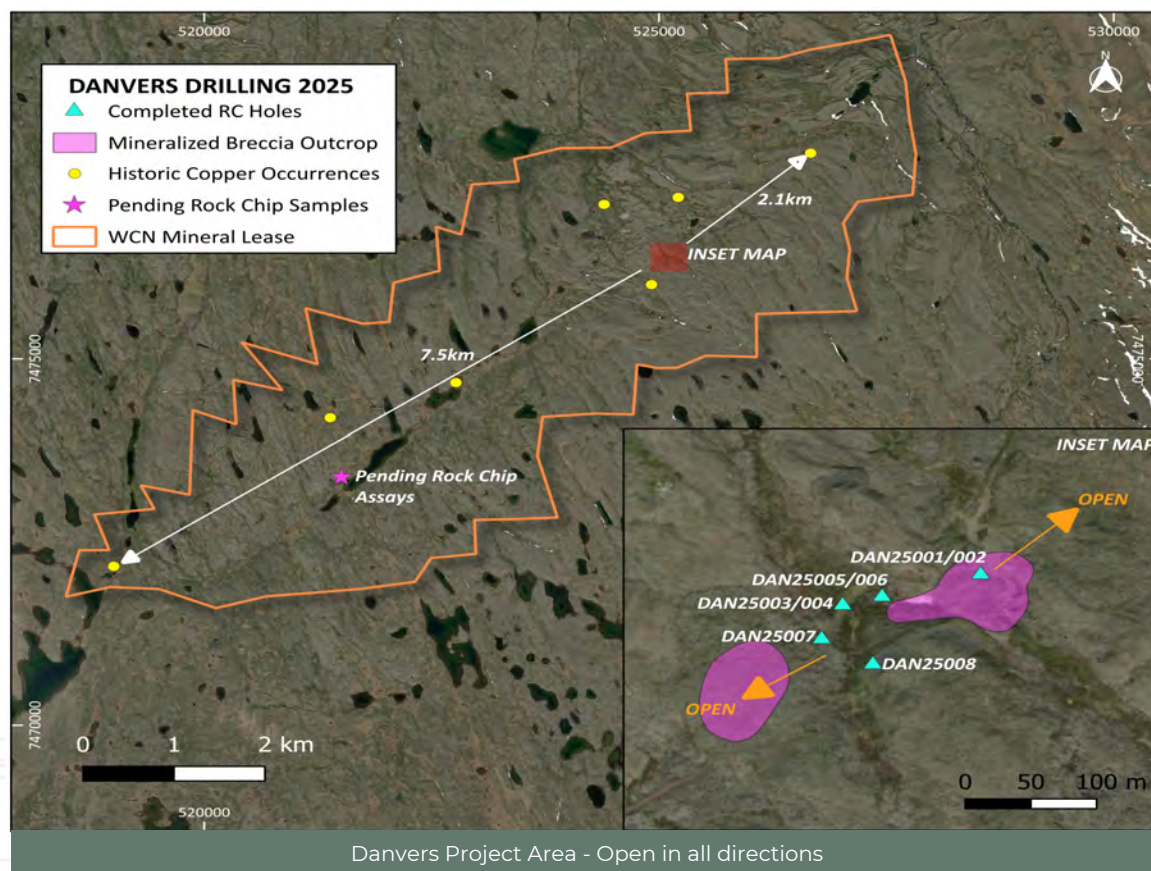
(1) See ASX announcements dated 30 April 2025 "First Assay Results from Rae Delivers 58m @ 3.08% Cu"; 6 May 2025 "175m @ 2.5% Copper hole ends in 4.46% Cu"; and 13 May 2025 "Further superior Cu intercepts at Rae"



# DANVERS OVERVIEW

## DANVERS - An opportunity to accelerate the pathway to an initial resource for the Rae area

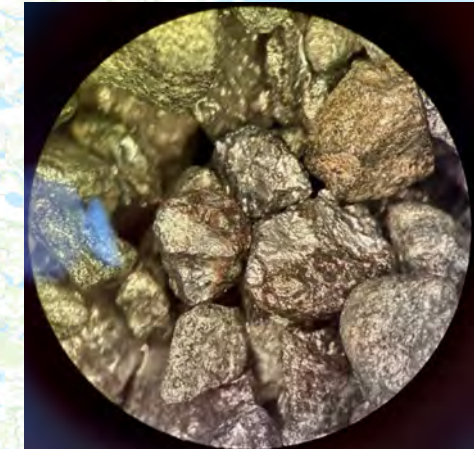
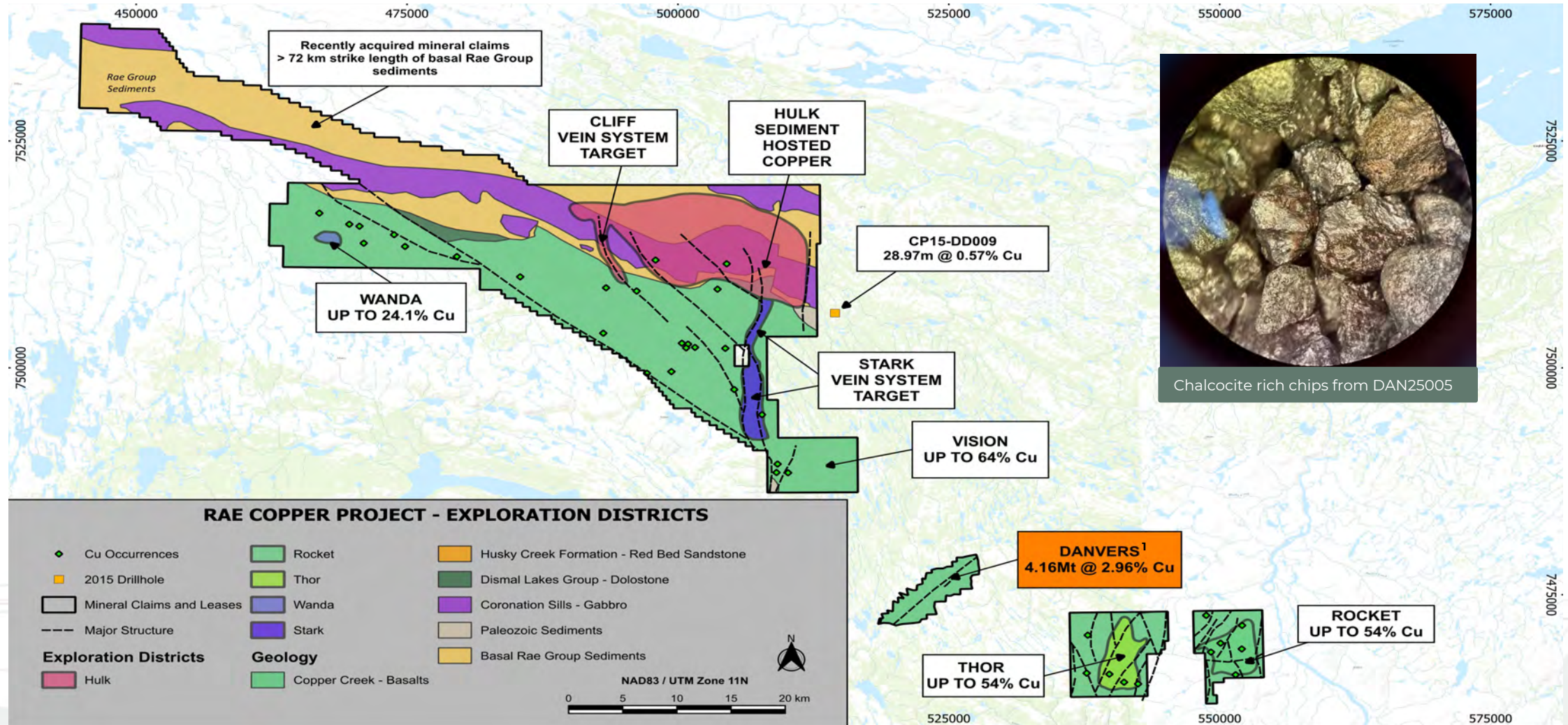
A high grade copper discovery with upside potential to be realised across >9km strike



(1) See ASX announcements dated 30 April 2025 "First Assay Results from Rae Delivers 58m @ 3.08% Cu"; 6 May 2025 "175m @ 2.5% Copper hole ends in 4.46% Cu"; and 13 May 2025 "Further superior Cu intercepts at Rae"



# RAE PROJECT AREA



Chalcocite rich chips from DAN25005

(1) See ASX Announcement - 26 November 2024 "White Cliff Minerals acquires highly prospective and proven Copper Project"



# FIELD WORK



Sample of Chalcocite-Bornite mineralisation in the Vision project area

## 2024 FIELD CAMPAIGN<sup>1</sup>

- High grade, copper samples, retrieved from multiple areas, across significant strike length on the Project area
- Multiple high-grade copper vein systems identified
- **Vision**  
A ±10km long NE/SW structural corridor, feeding from the Herb Dixon regional fault; results included **64.02% Cu & 152 g/t Ag** (F005965), **62.02% Cu & 162 g/t Ag** (F005966), **50.48% Cu & 102 g/t Ag** (F005959), **55.01% Cu** (F005977), **46.07% Cu** (F005984), **44.43% Cu** (F005979) and **43.10% Cu** (F005985)
- **Rocket**  
An area ±400m x 200m containing dominant chalcocite vein systems: **54.12% Cu** (F005950), **53.82% Cu** (F005949), **53.47% Cu** (F005935), **53.24% Cu** (F005944) and **51.59% Cu** (F005942)
- **Thor**  
host to the historic HALO occurrence, >800mtrs of outcropping mineralization identified: **54.02% Cu** (F005921), **25.7% Cu** (F005922), **24.4% Cu** (F005927) and **24.1% Cu** (F005931)

(1) See ASX Announcements - 4 October 2024 "Large Scale Copper Discovery Confirmed at Rae Project" and 14 October 2024 "High Grade Copper Results Continue at Rae"



# SEDIMENTARY COPPER

▲ COPPER-SILVER

## SEDIMENTARY HOSTED COPPER

- All first-order controls for a sediment-hosted copper deposit - with a proof-of-concept historic drilling result <2km east of our licence boundary
- Right time, right place: Proterozoic Era basins host some of the largest sediment hosted copper deposits
- Well-endowed district: Evidence of copper-fertile hydrothermal fluids is present throughout the project, evidenced by the numerous volcanic hosted showings
- Scale: >72km of highly prospective Rae Group sediments sit on the Company's licence



Copper rich rock sample (F005987) from Quartz sandstone at the Hulk Target



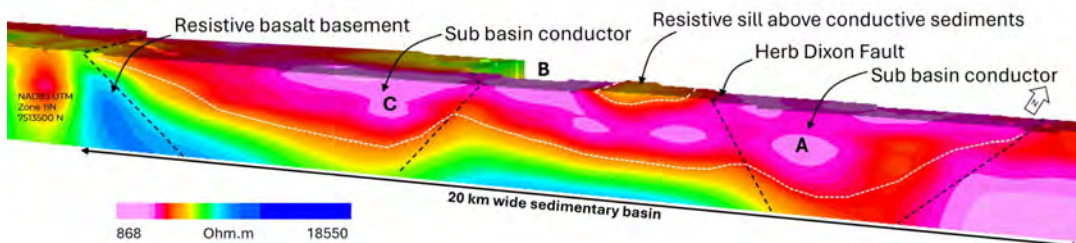
Helicopter supported field work in 2024 at the Company's Rae Project



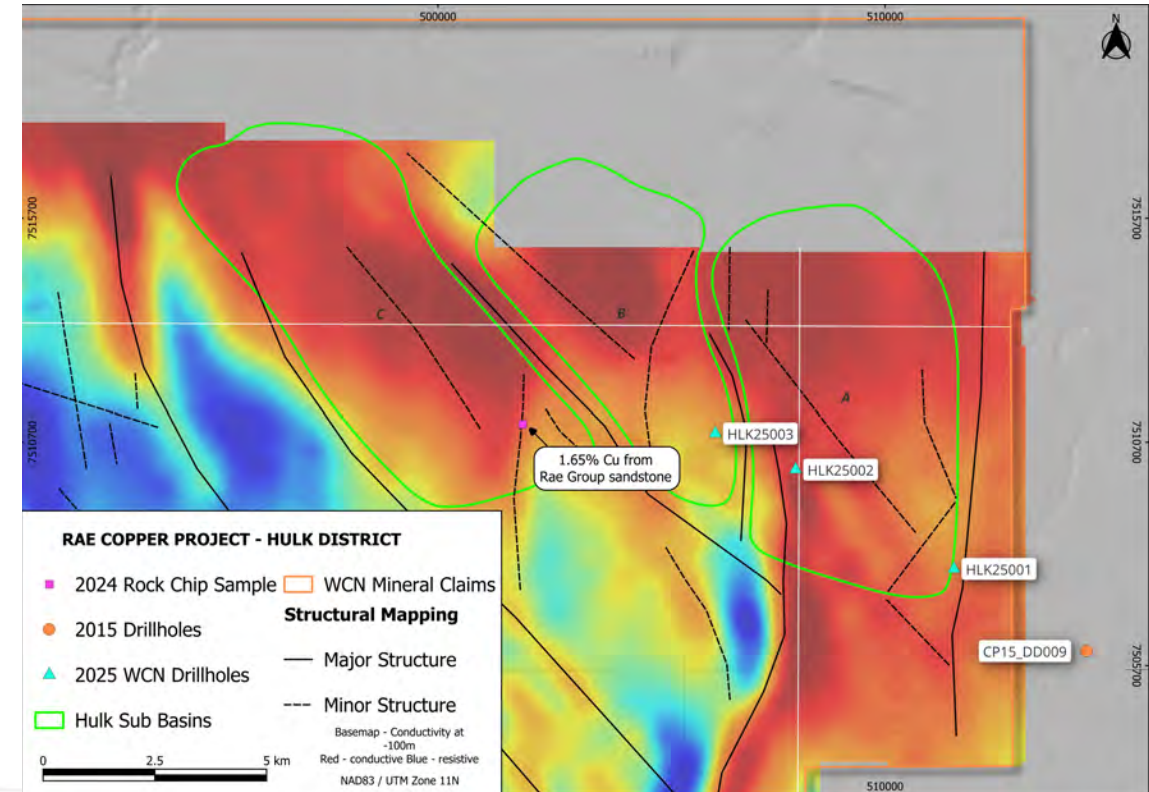
# HULK TARGET

## HULK - A DISTRICT SCALE CONDUCTIVE ANOMALY

- Three, fault controlled, sub basins covering > 20km of strike across the Rae Group Sediments
- Covers >150km<sup>1</sup> within a larger, sub-basin that has interpreted dimensions that exceed 20km by 10km with anomalies open to the north
- Mineralisation being targeted within a sedimentary horizon of between 200 & 300mtrs below surface intersections



Inverted conductivity section along line 7740 (N/S), looking East through the basalt-sediment contact. A gently north dipping conductive zone over >10km, is observed through the sub basin



Conductivity response within the Hulk target. Elevated conductivity is observed across km's within the Rae Group sediments, & remains open to the north into the newly acquired mineral claims

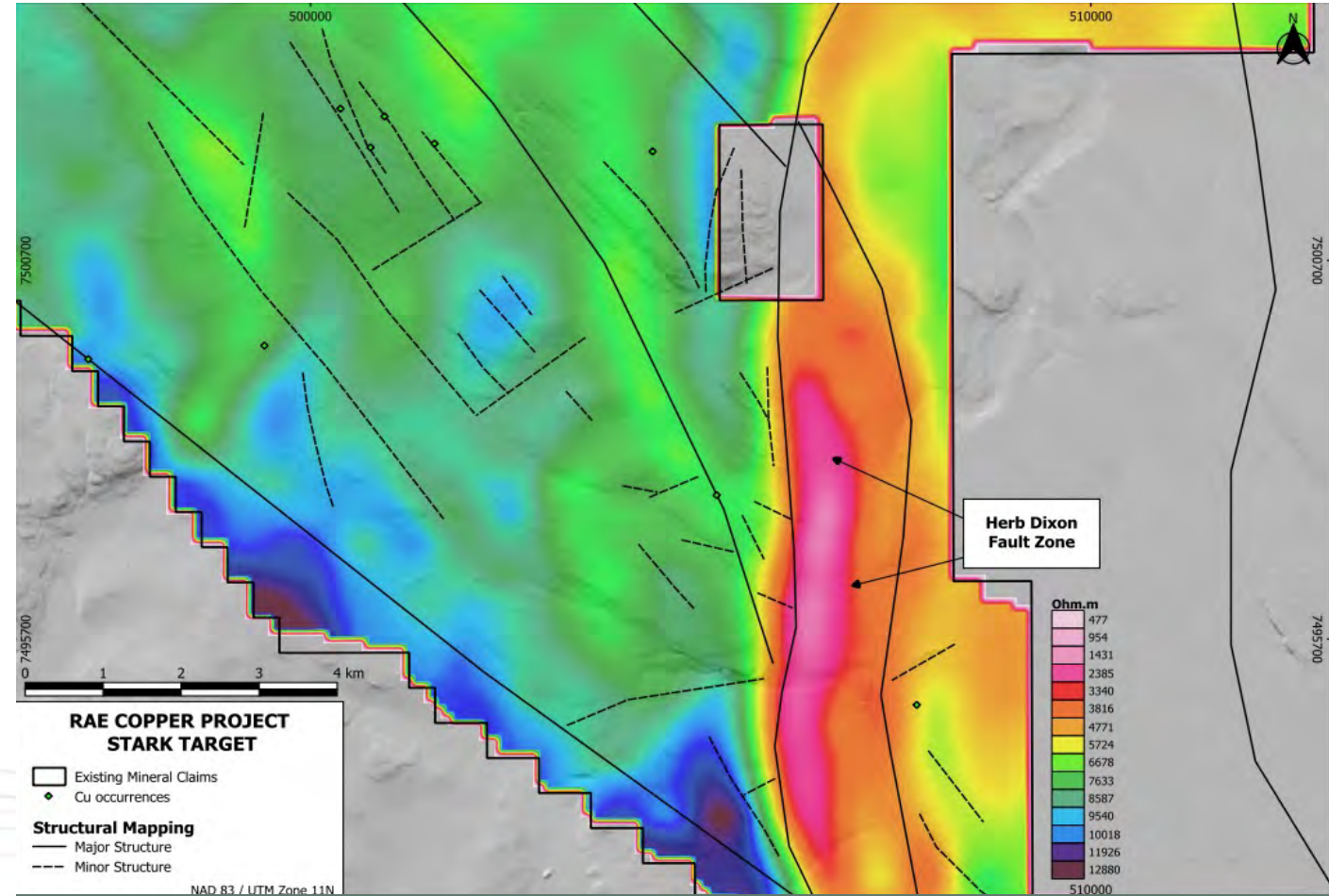
(1) See ASX Announcement – 29 October 2024 "Multiple conductive anomalies identified at Hulk"



# HERB DIXON FAULT TARGET - STARK

## STARK - A TARGET IN ITS OWN RIGHT? AND ... IS IT FEEDING HULK<sup>1</sup>

- Herb Dixon fault: a major, regional N/S fault covering >25km through the Company's Rae Project that intersects the Hulk area
- It can be traced to the Vision target where assays from rock chips included results of **64.02%, 62.02%, 55.01% and 50.48% Cu**
- The Stark target, situated on the Herb Dixon fault presents a highly conductive signature over more than 14km strike length and up to 2.2km wide that is coincident within a well-defined structure



(1) See ASX Announcements – 4 October 2024 "Large Scale Copper Discovery Confirmed"; 29 October 2024 "Multiple conductive anomalies identified at Hulk"; & 21 November 2024 "Geophysical Anomalies reveal New Copper Targets at Rae"

Map of the Herb Dixon Fault Zone target named STARK. >14 km of N/S strike of anomalous conductivity with a zone of 7 km showing high conductivity.



# GREAT BEAR CU-AU-AG-U PROJECT

▲ NORTHWEST TERRITORIES,  
CANADA



# PROJECT AREA

▲ COPPER-GOLD-SILVER-URANIUM



## OVERVIEW

- A **historic** and **proven** area
- Recognised as one of Canada's **largest uranium mining** districts
  - Total historical production across the area (pre-1982) was:
    - **13,700,000 pounds** of **uranium oxide (U<sub>3</sub>O<sub>8</sub>)**
    - **34,300,000 ounces** of refined **silver**
    - **11,377,040lbs** of **copper** with **gold** credits, and
    - **127,000 kilograms** of **nickel**, **227,000kg** of **cobalt** and **104,000kg** **lead**
- Historical focus on U, Ag overlooked **significant Cu and Au potential**

## GEOLOGY

- Great Bear Magmatic Zone - Identified as having Canada's **highest probability** for the hosting of **iron-oxide-copper-gold uranium** plus **silver-style** mineralisation in the Country<sup>1</sup>
- Hosts a spectrum of mineralisation styles within the broad IOCG hydrothermal model
  - Epithermal – Ag, Au, Cu, U,
  - Skarn – Ag, Cu, Mo, Pb, Zn, W
  - IOCG – Au, Ag, Co, Cu, +/- U
- **Untapped Potential** - Copper and Gold were never the focus of historic exploration work
- **Historic Data** - A wealth of data, that until now has never been fully integrated into GIS

(1) See ASX Announcement - 15 January 2024 "Large Scale Uranium Project Secured in Canada"



# GREAT BEAR PROJECT HIGHLIGHTS

▲ COPPER-GOLD-SILVER-URANIUM



## EARLY EXPLORATION SUCCESS SUGGESTS VAST POTENTIAL<sup>1</sup>

### MAIDEN FIELDWORK

Highlights from 2024 campaign, included the high grade, from surface samples:

- **Phoenix: 38.2 g/t Au & 76.5 g/t Ag** (F005424), **29.7 g/t Au & 121 g/t Ag** (F005426) and **42.6% Cu, 2.28g/t Au & 159 g/t Ag** (F005437)
- **Coyote: 17.4 g/t Au** (F005673) and **16.95 g/t Au & 10.55% Cu** (F005669)
- **Slider: 7.54% Ag** (F005907), **5.35% Ag** (F005909)

Field sampling demonstrates a highly mineralised system

### AERIAL GEOPHYSICS

Numerous gold, copper, silver and uranium geophysical anomalies coincident with surface sampling have identified walk up drill targets:

- A discreet high intensity anomaly within a 5 sq km collapse caldera in an area that the Canadian state survey previously identified as having the highest potential for IOCG in Canada at Coyote
- Resistivity anomalies at Slider indicate both linear and depth potential along strike from the previously mined high-grade deposits of Echo Bay
- At Viper, large conductive anomaly has been identified extending from surface to a depth of more than 1400m

## WHAT'S NEXT

A recently executed exploration agreement with the Dêłnê Got'ınê Government, allows the an expanded exploration footprint.

- **Ground truthing** at the new, high priority, geophysical targets at the Contact Lake fault. This anomaly covers an area almost geologically identical to the historic Eldorado and Echo Bay Mines, both of which historically produced large quantities of uranium and silver.
- **Drilling** at Great Bear. The Company is currently ranking its pipeline of walk up drill targets. Targets will include Gold, Silver, Copper and Uranium prospects.
- **Regional exploration.** The region is critically underexplored with a number of new targets, to the north and south having being generated by the ongoing digitisation of geological & exploration data.



# CORPORATE

▲ OVERVIEW



# CORPORATE OVERVIEW



## BOARD & EXECUTIVE TEAM



**Rod McIlree**  
**Executive Chairman**

Rod is an Australian geologist with extensive experience in developing large-scale projects. With extensive knowledge in M&A, international logistics and small-cap fundraisings, he provides the leadership for this new phase of growth of the company



**Troy Whittaker**  
**Managing Director**

Troy is an executive with more than 20 years of experience, spanning successful international project evaluation activities, and the development and operation of multibillion dollar assets globally across a broad range of commodities



**Eric Sondergaard**  
**Executive Director**

Eric is a registered Professional Geoscientist and a graduate of the University of Calgary in Canada. Eric brings over 20 years of operational experience in the mining industry, including significant expertise in frontier exploration and project management



**Dan Smith**  
**Non-Executive Director**

Dan has over 17 years of capital markets and corporate governance expertise. He is chairman or director for a number of companies on ASX and AIM operating in the natural resources sector



# CORPORATE OVERVIEW



## ▲ CAPITALISATION DATA<sup>1</sup>

**A\$0.029**  
SHARE PRICE A\$

**1,928M**  
BASIC S/O

**A\$56M**  
MARKET CAP

**A\$2.95M<sup>2</sup>**  
CASH

**A\$52M<sup>3</sup>**  
ENTERPRISE VALUE

## WCN SHARE PRICE



## SHAREHOLDER INFO

Top 20	32.62%
Board & Management <sup>4</sup>	18.67%
# of Shareholders	3,168

## WCN 52W PERFORMANCE

52w high	\$0.037
52w low	\$0.013
Average Volume (90 day)	8.75m/day

(1) as at 18 May 2025. To be updated pending receipt of capital raise funds A\$14.37m. See ASX announcement of 18 May 2025 ; (2) as per 2025 Q1 quarterly, see ASX announcement dated 29 April 2025 (3) after cash and liquid instruments; (4) includes strategic advisors

# WHITE CLIFF WHAT'S NEXT?

▲ UPCOMING CATALYSTS  
AND NEWSFLOW



# CANADA PROJECTS



## ▲ NEWSFLOW & WHAT'S NEXT



### Drilling @ Rae

Further drilling to be undertaken targeting the Hulk sedimentary targets; and - along strike and depth testing at Danvers



### Further Geophysics @ Rae

Selected geophysical survey and investigation to be undertaken to explore the 9.1km target fault zone at Danvers. Downhole electromagnetic surveys to be undertaken at Hulk



### Field work @ Great Bear

Further field truthing and surface sampling, following up on aerial geophysics results



### Planning

Further field reconnaissance, sampling & drilling programs across the Projects, refining the already impressive project pipeline



### Exploration

Ongoing exploration target generation across the portfolio of Projects



# COMPETENT PERSON STATEMENT



The information contained in this presentation has been prepared by White Cliff Minerals Limited (the Company).

The information in this report that relates to exploration results is based on, and fairly represents information and supporting documentation prepared by Mr Roderick McIlree, a Competent Person who is a Fellow of the Australasian Institute of Mining and Metallurgy. Mr McIlree is a Director of White Cliff Minerals Limited. Mr McIlree has sufficient experience that is relevant to the style of mineralisation and type of deposit under consideration and to the activity being undertaken to qualify as a Competent Person as defined in the 2012 Edition of the "Australasian Code for Reporting of Exploration Results, Mineral Resource and Ore Reserves". Mr McIlree consents to the inclusion in this report of the matters based on his information in the form and context in which it appears.

The historic resource estimate for the Licence, is a historic estimate and not in accordance with the JORC Code. The Company notes that the estimate and historic drilling results dated 1967 and 1968 are not reported in accordance with the NI 43-101 or JORC Code 2012. A competent person has not done sufficient work to disclose the estimate/results in accordance with the JORC Code 2012. It is possible that following further evaluation and/or exploration work that the confidence in the estimate and reported exploration results may be reduced when reported under the JORC Code 2012. Nothing has come to the attention of the Company that causes it to question the accuracy or reliability of the historical exploration results, but the Company has not independently validated the historical exploration results and therefore is not to be regarded as reporting, adopting or endorsing the historical exploration results.

This presentation relies on information previously released to the Australian Securities Exchange:

19 May 2025 "WCN completes successful capital raise at premium"  
13 May 2025 "Further superior Cu intercepts at Rae"  
6 May 2025 "175m @ 2.5% Copper hole ends in 4.46% Cu"  
30 April 2025 "First Assay Results from Rae Delivers 58m @ 3.08% Cu"  
28 April 2025 "Large Scale, High Tenor Geophysical Anomalies at Great Bear"  
15 April 2025 "Sale of Reedy South Gold Project for A\$1.2m Cash"  
20 March 2025 "Exploration Agreement executed for the Great Bear Project"  
26 November 2024 "White Cliff Minerals acquires highly prospective and proven Copper Project"  
21 November 2024 "Geophysical Anomalies reveal New Copper Targets at Rae"  
29 October 2024 "Multiple conductive anomalies identified at Hulk"  
14 October 2024 "High Grade Copper Results Continue at Rae"  
4 October 2024 "Large Scale Copper Discovery Confirmed at Rae Project"  
27 August 2024 "Bonanza Grade Silver Discovery at the Great Bear Project"  
20 August 2024 "Great Bear Project delivers further outstanding Copper, Gold & Silver assays"

213 August 2024 "Extraordinary Cu, Au & Ag Assays Received at Great Bear"  
1 August 2024 "WCN Successfully Concludes Maiden Canadian Field Programs"  
5 July 2024 "Widespread Chalcocite Dominant Vein Systems at Rae Cu-Ag-Au"  
22 July 2024 "Appointment of Strategic Advisor"  
18 July 2024 "Further IOCG, Copper & Epithermal Mineralisation Discovered"  
12 July 2024 "IOCG & Epithermal Mineralisation Discovered at Great Bear"  
8 July 2024 "Additional Land Acquired at Nunavut Cu-Ag-Au Project"  
28 May 2024 "Imminent Field Activities for Nunavut Cu-Au-Ag Project"  
20 May 2024 "Priority Targets Confirmed at Great Bear Lake (Radium Point)"  
25 March 2024 "Multiple High-Grade Uranium & Copper Targets at Radium Point"  
15 January 2024 "Large Scale Uranium Project Secured in Canada"  
8 November 2023 "White Cliff Secures Multiple High Grade Copper Projects"  
27 March 2023 "Sale of Yinnetharra REE/Li Project to Minerals 260 Ltd"

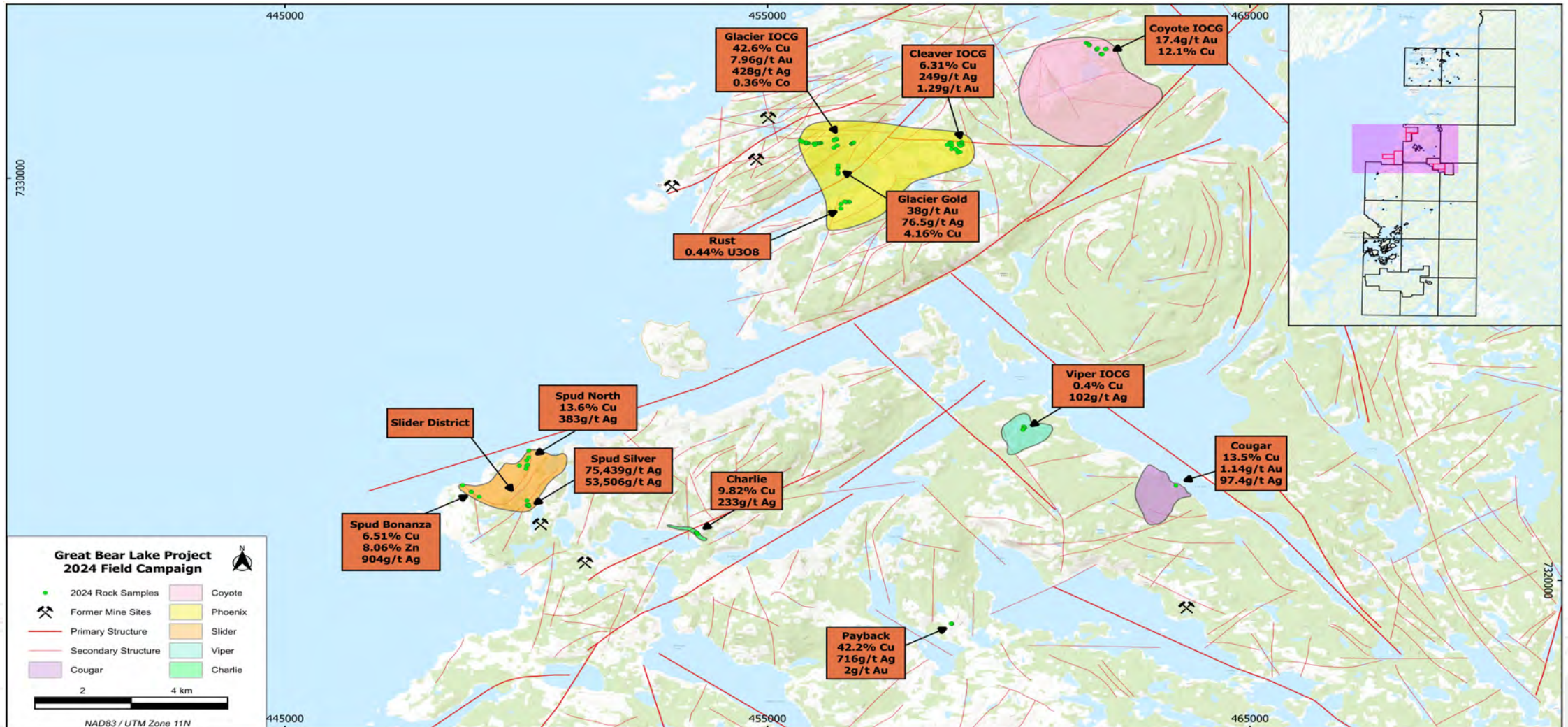


# ANNEXURES



# GREAT BEAR PROJECT MAP

▲ COPPER-GOLD-SILVER-URANIUM





# GREAT BEAR PROJECT - PHOENIX

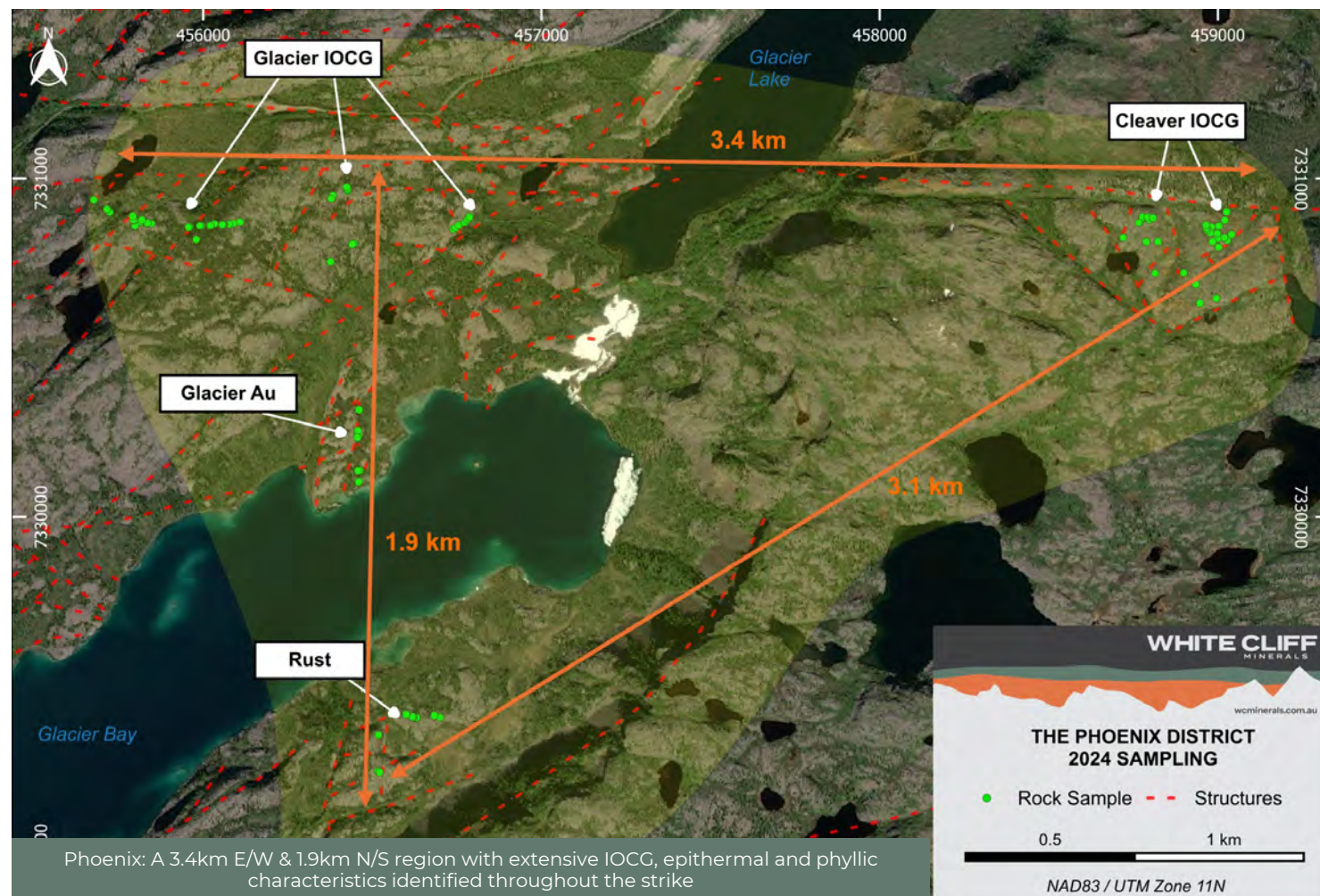
▲ COPPER-GOLD-SILVER-URANIUM



## PHOENIX<sup>1</sup>

- Close proximity to existing logistics infrastructure
- District scale, mineralised region along a major E/W fault
- Located only a kilometer east from the historic Eldorado & Echo Bay mines.
- 2024 maiden campaign -delivered high grade **Copper, Gold & Silver**:
  - **42.60% Cu, 2.28g/t Au & 159g/t Ag** (F005437)
  - **39.50% Cu, 3.54g/t Au & 181g/t Ag** (F005436)
  - **39.50% Cu, 2.28g/t Au & 131g/t Ag** (F005435)
  - **6.31% Cu, 28.2 g/t Ag & 0.468 g/t Au** (F005688)
  - **249 g/t Ag, 3.00% Cu & 0.717 g/t Au** (F005646)
  - **38.2g/t Au, 76.5g/t Ag, 4.16% Cu** (F005424)
  - **29.7g/t Au, 121g/t Ag, 2.55% Cu** (F005426)

(1) See ASX Announcement - 13 August 2024 "Extraordinary grade Copper, Gold & Silver assays received"



# GREAT BEAR PROJECT - SLIDER

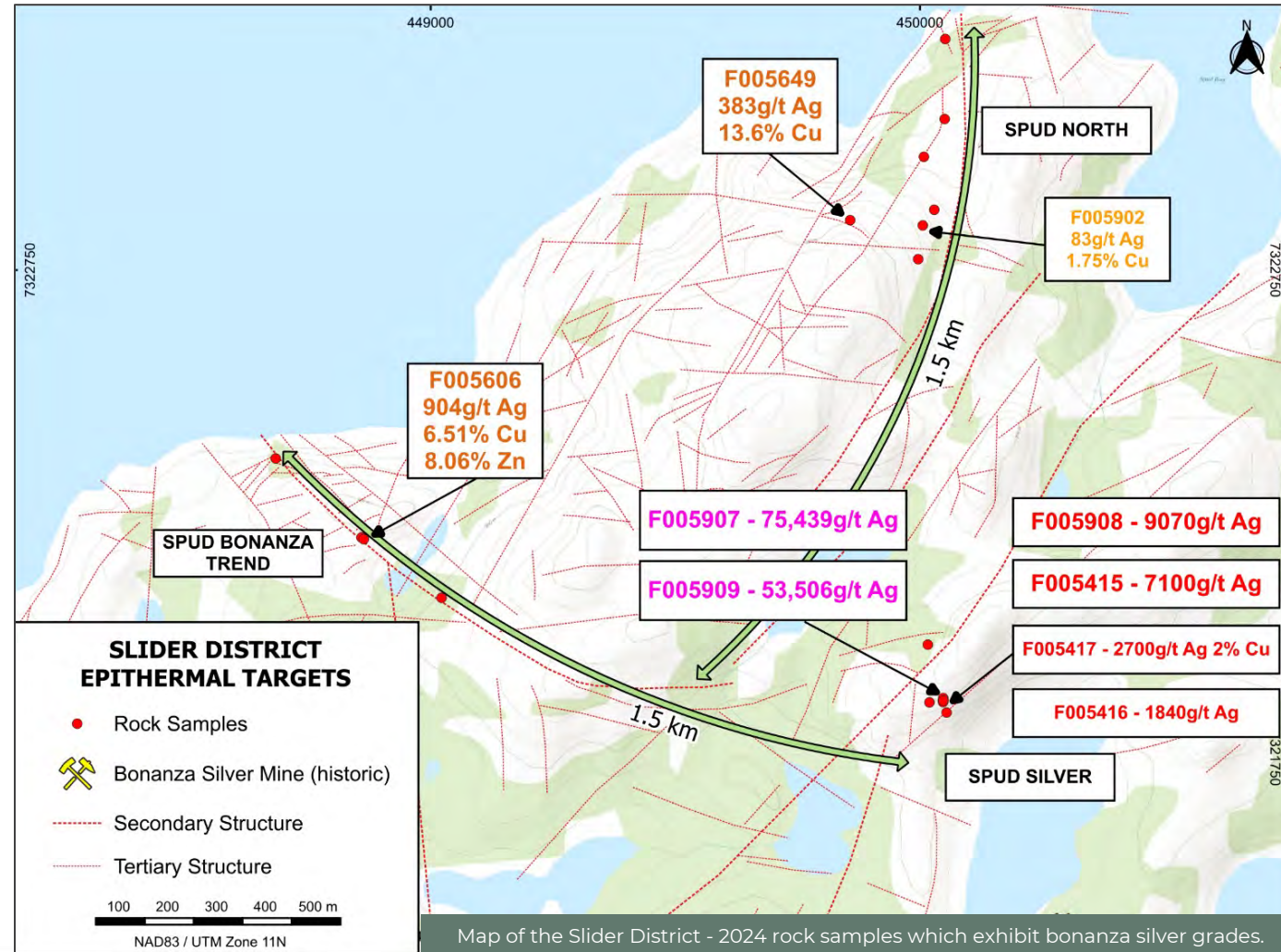
▲ COPPER-GOLD-SILVER-URANIUM



## SLIDER<sup>1</sup>

- A genuine, **high grade, major silver discovery** just 530m NW of the Silver Mines that produced 34,300,000oz of refined Silver
- 2024 maiden campaign -delivered Bonanza Grade Silver:
  - **7.54% Ag (75,439g/t)** (F005907)
  - **5.35% Ag (53,506g/t)** (F005909)
  - **9,070g/t Ag** (F005908)
  - **7,100g/t Ag** (F005415)
  - **2,700g/t Ag & 2.0% Cu** (F005417)
- Area remains significantly underexplored, with scope for further native and/or high grade silver discoveries

(1) See ASX Announcement - 27 August 2024 "Bonanza Grade Silver Discovery at the Great Bear Project"





# GREAT BEAR PROJECT - COYOTE

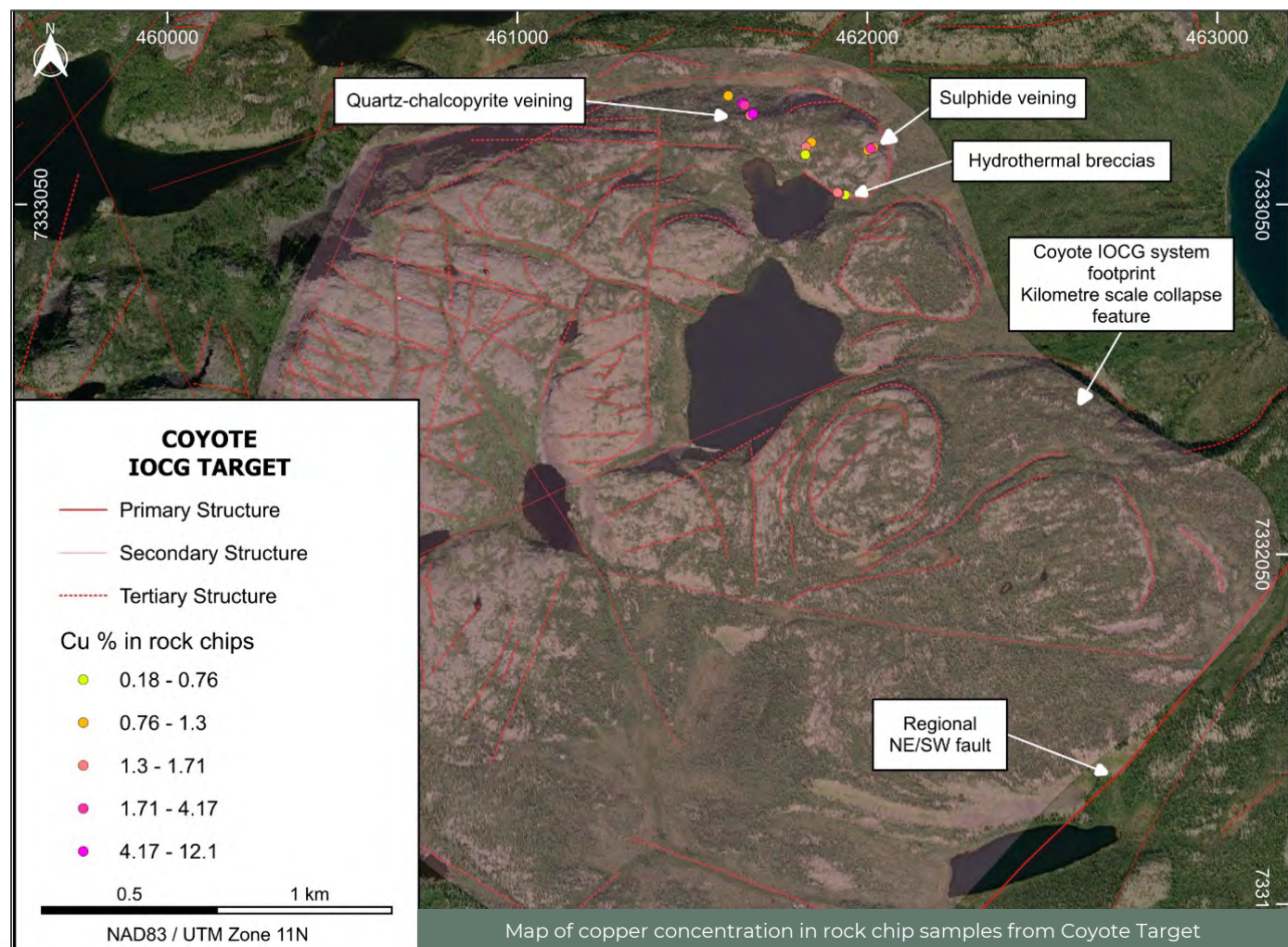
▲ COPPER-GOLD-SILVER-URANIUM



## COYOTE<sup>(1)</sup>

- Located 7.3km NE of the historic Eldorado Minesite
- Collapse spanning 2.5km diameter features may indicate dilation/brecciation/permeability creation at depth
- Samples taken from NE 440 x 195m zone only:
  - **17.4 g/t Au, 1.47% Cu, 29.6 g/t Ag** (F005673)
  - **16.95 g/t Au, 10.55% Cu, 45.3 g/t Ag** (F005669)
  - **15.1 g/t Au, 4.2 g/t Ag & 0.18% Cu** (F005684)
  - **14.35 g/t Au, 1.75% Cu, 32.5 g/t Ag** (F005683)
  - **8.91 g/t Au, 1.47% Cu, 62.5 g/t Ag** (F005682)
  - **12.10% Cu, 1.35 g/t Au, 20.3 g/t Ag** (F005670)

(1) See ASX Announcement - 19 August 2024 "Great Bear Project delivers further outstanding Cu, Au & Ag assays"



# GREAT BEAR PROJECT - OTHER PROSPECTS



▲ COPPER-GOLD-SILVER-URANIUM

## PAYBACK<sup>1</sup>

- Located south of the **historic Echo Bay & Eldorado** mines and only 13km south of Phoenix
- High grade polymetallic, fracture and veinlet controlled mineralisation:
  - **42.20% Cu, 716 g/t Ag** (F005604)
  - **30.20% Cu, 153 g/t Ag** (F005602)
  - **10.30% Cu, 116 g/t Ag, 2.04 g/t Au** (F005601)

## COUGAR<sup>1</sup>

- Approximately 3.4km from Viper
- An IOCG target on the within the Contact Lake Belt
- Target area spans **1500 m N/S and 1100 m E/W**
- Rock chips sample returned an assay result of **13.5% Cu, 1.14 g/t Au, 97.4 g/t Ag** (F005648)

## CHARLIE<sup>2</sup>

- Strike covers approximately 900m
- Grab samples from the maiden campaign include:
  - **233g/t Ag and 9.8% Cu** (F005408)
  - **135g/t Ag and 8.3% Cu** (F005407)
  - **3.4% Cu, 24g/t Ag and 0.24% W** (F005405)

## VIPER<sup>1</sup>

- An IOCG target that includes the historic K2 occurrence
- 2024 sampling produced high grade silver rock chips over an initial N/S strike of 75m
  - **102 g/t Ag, 0.137 g/t Au** (F005910)
  - **25.9 g/t Ag, 0.31 g/t Au** (F005913)
  - **13.15 g/t Ag and 0.44% Cu** (F005914)

(1) See ASX Announcements - 19 August "Great Bear Project delivers further outstanding Cu, Au & Ag assays"

(2) See ASX Announcement - 27 August "Bonanza Grade Silver Discovery at the Great Bear Project"



# CONTACT INFORMATION

▲ TROY WHITTAKER

P: +61 8 9486 4036

E: [info@wcminerals.com.au](mailto:info@wcminerals.com.au)